

Hydraulic iron worker

Hydraulic iron worker MX340G

The Hydraulic Punching Machine MX340G Nargesa main feature is its versatility. It can make several functions as punching operations in metal sheet, flat bar, pipe, angle, U-T-UPN-IPN profiles, folding, cutting, tube notching, inlaying, punching, bending sheets, stamping... It can be suitable for any other kind of tooling.

Reference	100-02-01-002
Engine power	2,2 KW / 3 HP
Three-phased tension	230 / 400 V
Hydraulic power	40 Tn
Working speed	7,1 mm/s
Return speed	9,3 mm/s
Punch displacement	100 mm
Neck	180 mm
Tooling support table	245x265 mm
Dimensions	690x870x1780 mm
Weight	615 Kg
PRICE	7490,00 €



Accessories for Hydraulic iron worker MX340G

Fitting nuts for punches MX340



TAP



ATAP

Reference	Type	Fitting nuts for punches	PRICE
120-02-01-00011	TAP28	Fitting nuts for punches N28 <i>Standard</i>	85,00 €
140-02-01-00019	TAP40	Fitting nuts for punches N40	85,00 €
140-02-01-00020	TAP50	Fitting nuts for punches N50	85,00 €
140-02-01-00021	TAP60	Fitting nuts for punches N60	85,00 €
125-02-01-00002	ATAP	Fitting part for TAP60	69,00 €

Fitting parts for dies MX340



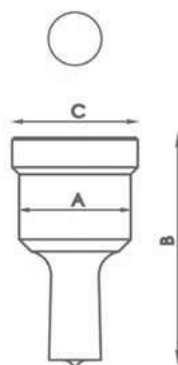
CAB



PORTABASES

Reference	Type	Fitting for dies	PRICE
120-02-01-00012	N46	Fitting for dies N46 <i>Standard</i>	59,00 €
140-02-01-00024	N60	Fitting for dies N60	59,00 €
140-02-01-00025	N78	Fitting for dies N78	59,00 €
140-02-01-00037	N100	Base holder for dies N100	217,00 €
140-02-01-00038	N125	Base holder for dies N125	232,00 €

Standard round punches MX340

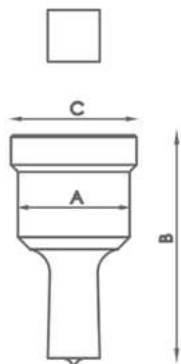


Type	Available sizes in mm Ø	A	B	C	PRICE
N28	3/3'5/4/4'5/5/5'5/6/6'5/7/7'5/8 8'5 /9mm up to 28mm from 0'5 in 0'5mm	28 mm	58 mm	31,5 mm	21,70 €/uni
N40	29/30/31/32/33/34/35 36/37/38/39/40mm	40 mm	64 mm	43,5 mm	31,00 €/uni
N50	41/42/43/44/45/46/47/48/49/50mm	50 mm	58 mm	54 mm	57,00 €/uni
N60	52/54/56/58/60mm	60 mm	58 mm	64 mm	110,00 €/uni
N75	62/64/66/68/70/72/74mm	75 mm	58 mm	79 mm	110,00 €/uni
N100	76/78/80/82/84/86/88 90/92/94/96/98/100mm	100 mm	58 mm	104 mm	166,00 €/uni

For different sizes, please ask the manufacturer

Accessories for Hydraulic iron worker MX340G

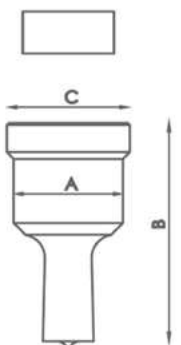
Standard square punches MX340



Type	Available sizes in mm	A	B	C	PRICE
N28	4/5/6/7/8/9/10/11/12/13/14/15 16/17/18/19/20mm	28 mm	58 mm	31,5 mm	41,00 €/uni
N40	21/22/24/26/28mm	40 mm	64 mm	43,5 mm	71,00 €/uni
N50	31/33/35mm	50 mm	58 mm	54 mm	79,00 €/uni
N75	40/44/48/53mm	75 mm	58 mm	79 mm	155,00 €/uni
N100	58/64/70mm	100 mm	58 mm	104 mm	197,00 €/uni

For different sizes, please ask the manufacturer

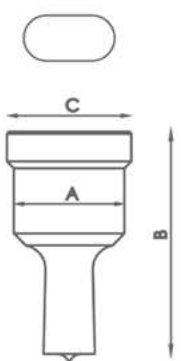
Standard rectangular punches MX340



Type	Available sizes in mm	A	B	C	PRICE
N28	7x10/7x15/9x13/9x19/11x17/11x23 13x19/15x21mm	28 mm	58 mm	31,5 mm	41,00 €/uni
N40	13x25/15x27/17x25/19x30/20x34mm	40 mm	64 mm	43,5 mm	71,00 €/uni
N50	25x43mm	50 mm	58 mm	54 mm	79,00 €/uni
N75	25x70mm	75 mm	58 mm	79 mm	155,00 €/uni
N100	25x96mm	100 mm	58 mm	104 mm	196,00 €/uni

For different sizes, please ask the manufacturer

Standard oval punches MX340

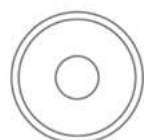
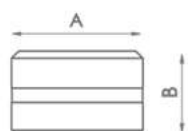


Type	Available sizes in mm	A	B	C	PRICE
N28	7x10/7x15/7x20/9x13/9x19/11x17 11x23/13x18/13x22/13x27/15x20/15x24 15x27/17x22/17x26/19x26/21x27mm	28 mm	58 mm	31,5 mm	41,00 €/uni
N40	13x31/15x31/17x31/17x40/19x31 19x40/21x31/21x40mm	40 mm	64 mm	43,5 mm	71,00 €/uni
N50	25x45/25x50mm	50 mm	58 mm	54 mm	79,00 €/uni
N75	27x63/27x75mm	75 mm	58 mm	79 mm	156,00 €/uni
N100	30x87/30x100mm	100 mm	58 mm	104 mm	197,00 €/uni

For different sizes, please ask the manufacturer

Accessories for Hydraulic iron worker MX340G

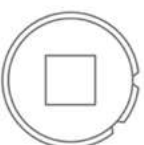
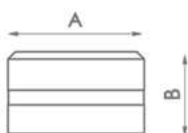
Standard round dies MX340



Type	Available sizes in mm	A	B	PRICE
N46	3/3,5/4/4,5/5/5,5/6/6,5/7/7,5/8/8,5 9mm up to 28mm from 0,5 in 0,5mm	46 mm	28,5 mm	16,00 €/uni
N60	29/30/31/32/33/34/35/36/37/38/39/40mm	60 mm	32 mm	20,00 €/uni
N78	41/42/43/44/45/46/47/48/49/50mm	78 mm	28,5 mm	84,00 €/uni
N100	52/54/56/58/60/62/64/66/68/70/72/74mm	100 mm	28,5 mm	111,00 €/uni
N125	76/78/80/82/84/86/88/90/92/94/96/98/100mm	125 mm	28,5 mm	130,00€/uni

For different sizes, please ask the manufacturer

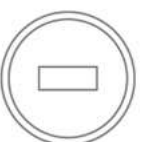
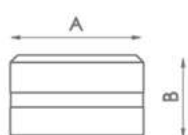
Standard square dies MX340



Type	Available sizes in mm	A	B	PRICE
N46	4/5/6/7/8/9/10/11/12/13/14/15/16/17/18/19/20mm	46 mm	28,5 mm	49,00€/uni
N60	21/22/24/26/28mm	60 mm	32 mm	57,00 €/uni
N78	31/33/35mm	78 mm	28,5 mm	126,00 €/uni
N100	40/44/48/53mm	100 mm	28,5 mm	160,00 €/uni
N125	58/64/70mm	125 mm	28,5 mm	189,00 €/uni

For different sizes, please ask the manufacturer

Standard rectangular dies MX340

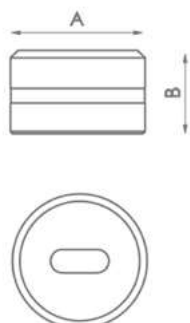


Type	Available sizes in mm	A	B	PRICE
N46	7x10/7x15/9x13/9x19/11x17/11x23 13x19/13x25/15x21mm	46 mm	28,5 mm	49,00 €/uni
N60	15x27/17x25/19x30/20x34mm	60 mm	32 mm	57,00 €/uni
N78	25x43mm	78 mm	28,5 mm	12600 €/uni
N100	25x70mm	100 mm	28,5 mm	160,00 €/uni
N125	25x96mm	125 mm	28,5 mm	189,00 €/uni

For different sizes, please ask the manufacturer

Accessories for Hydraulic iron worker MX340G

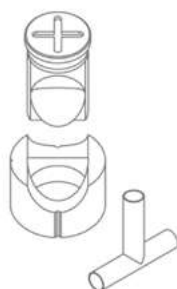
Oval dies MX340



Type	Available sizes in mm	A	B	PRICE
N46	7x10/7x15/7x20/9x13/9x19/11x17/11x23 13x18/13x22/13x27/15x20/15x24/15x27 17x22/17x26/19x26/21x27mm	46 mm	28,5 mm	31,00 €/uni
N60	13x31/15x31/17x31/17x40/19x31 19x40/21x31/21x40mm	60 mm	32 mm	40,00 €/uni
N78	25x45/25x50mm	78 mm	28,5 mm	126,00 €/uni
N100	27x63/27x75mm	100 mm	28,5 mm	160,00 €/uni
N125	30x87/30x100mm	125 mm	28,5 mm	189,00 €/uni

For different sizes, please ask the manufacturer

Tube notching tooling MX340



Reference	Available sizes in mm	Required fitting		PRICE
MAN28	Tube from 16 to 28mm	TAP 28	CAB 46	264,00 €/uni
MAN40	Tube from 28,5 to 40mm	TAP 40	CAB 60	334,00 €/uni
MAN50	Tube from 40,5 to 50mm	TAP 50	CAB 78	406,00 €/uni
MAN60	Tube from 50,5 to 60mm	TAP 60		490,00 €/uni

For different sizes, please ask the manufacturer

Corner rounding tooling MX340

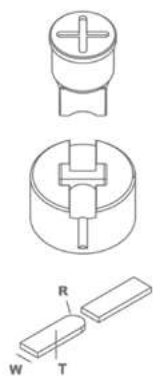


Reference	Available sizes in mm	Required fitting		PRICE
MRE28	Radius from 3 to 15mm	TAP 28	CAB 46	270,00 €/uni
MRE40	Radius from 16 to 26mm	TAP 40	CAB 60	387,00 €/uni
MRE50	Radius from 26,5 to 32mm	TAP 50	CAB 78	439,00 €/uni

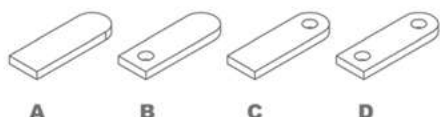
For different sizes, please ask the manufacturer

Accessories for Hydraulic iron worker MX340G

Flat bar round end tooling R1 MX340



Reference	Model	Width size	Required fitting	PRICE
MOR1-35A	A	From 20 to 35mm	TAP28 / TAP40	452,00 €/uni
MOR1-35B	B	From 20 to 35mm	TAP28 / TAP40	586,00 €/uni
MOR1-35C	C	From 20 to 35mm	TAP28 / TAP40	586,00 €/uni
MOR1-35D	D	From 20 to 35mm	TAP28 / TAP40	679,00 €/uni
MOR1-50A	A	From 40 to 50mm	TAP50 / TAP60 with ATAP	487,00 €/uni
MOR1-50B	B	From 40 to 50mm	TAP50 / TAP60 with ATAP	609,00 €/uni
MOR1-50C	C	From 40 to 50mm	TAP50 / TAP60 with ATAP	609,00 €/uni
MOR1-50D	D	From 40 to 50mm	TAP50 / TAP60 with ATAP	722,00 €/uni



For different sizes, please ask the manufacturer.

When placing order it must be specified the REFERENCE, MODEL,

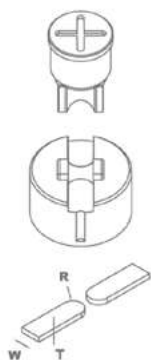
R (radius), W (flat bar width), T (flat bar thickness)

In models B, C and D specify diameter of the hole.

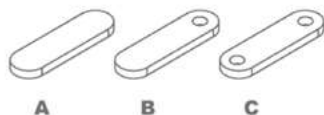
The ear shaped length is always adjustable.

Production capacity: 450 to 600 parts per hour.

Flat bar round end tooling R2 MX340



Reference	Model	Width size	Required fitting	PRICE
MOR2-35A	A	From 20 to 35mm	TAP28 / TAP40	452,00 €/uni
MOR2-35B	B	From 20 to 35mm	TAP28 / TAP40	586,00 €/uni
MOR2-35C	C	From 20 to 35mm	TAP28 / TAP40	679,00 €/uni
MOR2-50A	A	From 40 to 50mm	TAP50 / TAP60 con ATAP	487,00 €/uni
MOR2-50B	B	From 40 to 50mm	TAP50 / TAP60 con ATAP	609,00 €/uni
MOR2-50C	C	From 40 to 50mm	TAP50 / TAP60 con ATAP	722,00 €/uni



Para medidas distintas o superiores consultar con el fabricante.

Al realizar el pedido especificar REFERENCIA, MODELO, R (radio),

W (ancho pletina), T (grosor pletina)

En los modelos B y C especificar diámetro del agujero.

La longitud de la orejeta siempre es ajustable.

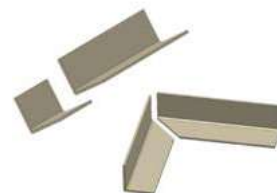
Capacidad de producción: 450 a 600 piezas la hora.

Accessories for Hydraulic iron worker MX340G

Angle cutting tooling. MX340



Reference: 140-02-01-00001
Angle cutting tooling, from 90° up to 45°.



Units per machine	Max. Capacity for straight cut	Max. Cutting capacity for miter	Weight	PRICE
1	60x60mm	50x50mm	32 Kg	1.142,00 €

Flat bar cutting tooling. MX340



Reference: 140-02-01-00002
Tooling for cutting sheet or flat bars from 0.8mm up to 10mm thickness.

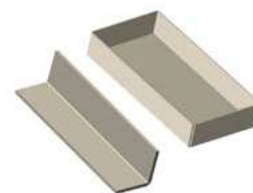


Units per machine	Max. Cutting capacity	Weight	PRICE
1	100x10mm	28 Kg	932,00 €

Folding tooling 170mm. MX340

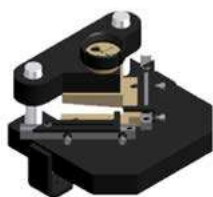


Reference: 140-02-01-00004
Tooling for folding sheet and flat bar up to 170mm. 88° punch. Dies with V for 56mm and V for 26m.

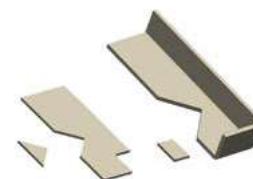


Units per machine	Max folding length	Max folding thickness	Weight	PRICE
1	170mm	8 to 12mm	12 Kg	732,00 €

Stripping tooling to 90° adjustable 100x100 MX340



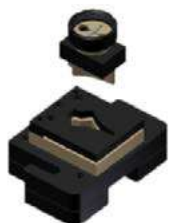
Reference: 140-02-01-00005
Stripping tooling for angle etc. Adjustable up to 100x100mm to 90° fijos.



Units per machine	Max. Cutting capacity	Weight	PRICE
1	100x100x4	21 Kg	1.142,00 €

Accessories for Hydraulic iron worker MX340G

Arrow tooling for metal sheet MX340



Reference: 140-02-01-00006

Tooling for punching metal sheet in arrow shapes for fences.



Units per machine	Max. Sheet Thickness	Weight	PRICE
1	3mm	21 Kg	1.059,00 €

Arrow tooling for pipes MX340



Reference: 140-02-01-00007

Tooling to flatten and cut arrow shaped pipes end. Suitable for different diameters.



Units per machine	Pipe max. Diameter	Min. Pipe diameter	Weight	PRICE
1	30x2mm	10x2mm	19 Kg	995,00 €

Ventilation grip tooling. MX340



Reference: 140-02-01-00010

Tooling to make ventilation grips in metal sheet. Adjustable amount of punchings. They are to made one by one.



Units per machine	Punchings sizes	Max. thickness	Weight	PRICE
1	100x20mm	2mm	20Kg	877,00 €

Angle & U profile punching tooling MX340



Reference: 140-02-01-00031

Base holder for angle punching. Suitable for punches and dies of different diameters, exchangeables.



Units per machine	Max. Hole diameter	Min. Hole diameter	Weight	PRICE
1	28mm	2mm	7 Kg	246,00 €

Accessories for Hydraulic iron worker MX340G

Round bar cutting tooling. MX340



Reference: 140-02-01-00035

Tooling for cutting round bar from 3mm up to 35mm.



Units per machine	Max. Cutting diameter	Min. Cutting diameter	Weight	PRICE
1	35mm	3mm	15 Kg	895,00 €

Locks punch and die MX340



Reference: 140-02-01-00036

Set for making the lock hole in metal sheet.

Necessary complements: CAB60 and TAP40



Parts per set	Max. Thickness	Weight	PRICE
2	6mm	1 Kg	227,00 €

Flattening tooling MX340



Reference: 140-02-01-00039

It's an extractor which acts as the flat bar holder at the punching time to prevent the flat bar from deformation while being punched.



Parts per tooling	Flat Bar Max Thickness	Weight	PRICE
3	15mm	15 Kg	861,00 €

Fence post end tooling MX340



Reference: 140-02-01-00040

Tooling to flatten and punch the pipe for fences. It admits different pipe diameters. Exchangeable hole size.



Parts per tooling	Max. Pipe diameter	Min. Pipe diameter	Hole diameter	Weight	PRICE
2	50mm	10mm	Exchangeable	23 Kg	1.042,00 €